

DP-203 Microsoft Azure Data Engineer

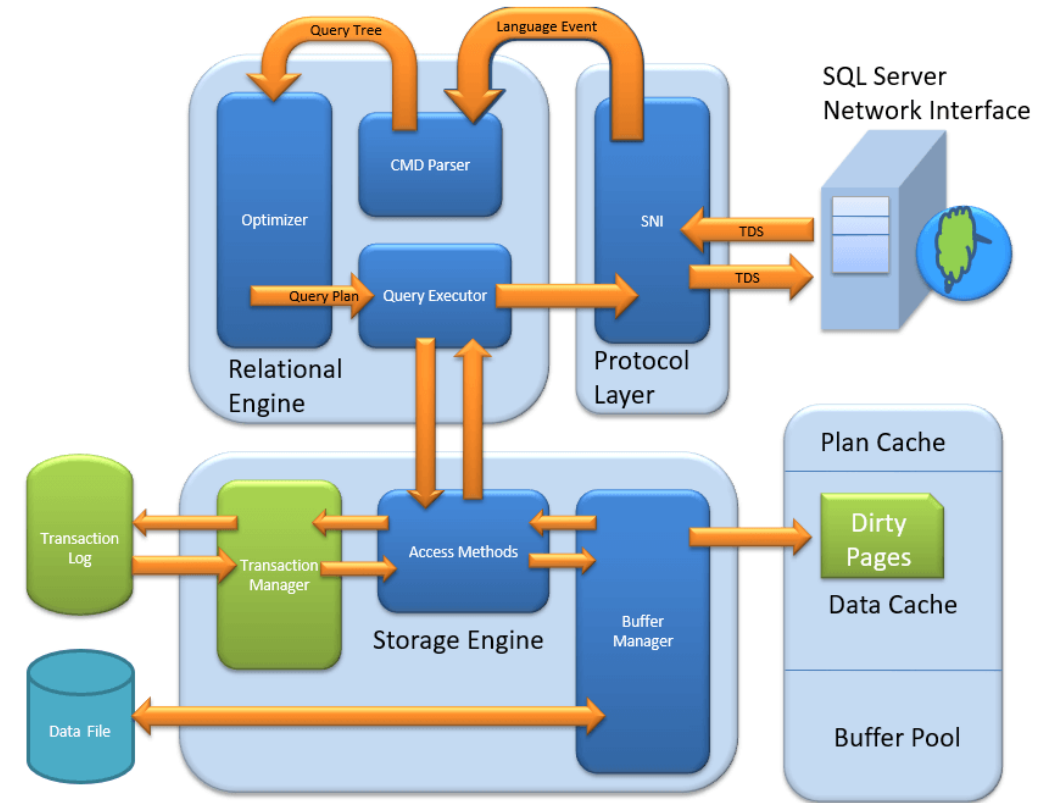
Azure SQL / MSSQL Server

26th Jul 2021

Lakshay Datwani

Sql Server Architecture

- Protocol Layer-SNI
 - Shared Memory
 - TCP/IP
 - Named Pipes
 - What is TDS?
- Relational Engine
 - CMD Parser
 - Optimizer
 - Query Executer
- Storage Engine
 - File types
 - Access Method
 - Buffer Manager
 - Plan Cache
 - Data Parsing: Buffer cache & Data Storage
 - Transaction Manager



Why Sql Server In Azure?



Fully Managed



Predictable performance and pricing



Elastic pool for unpredictable workloads



99.99% availability built-in



Geo-replication and restore services



Supports existing SQL Server tools, libraries, and ADIe

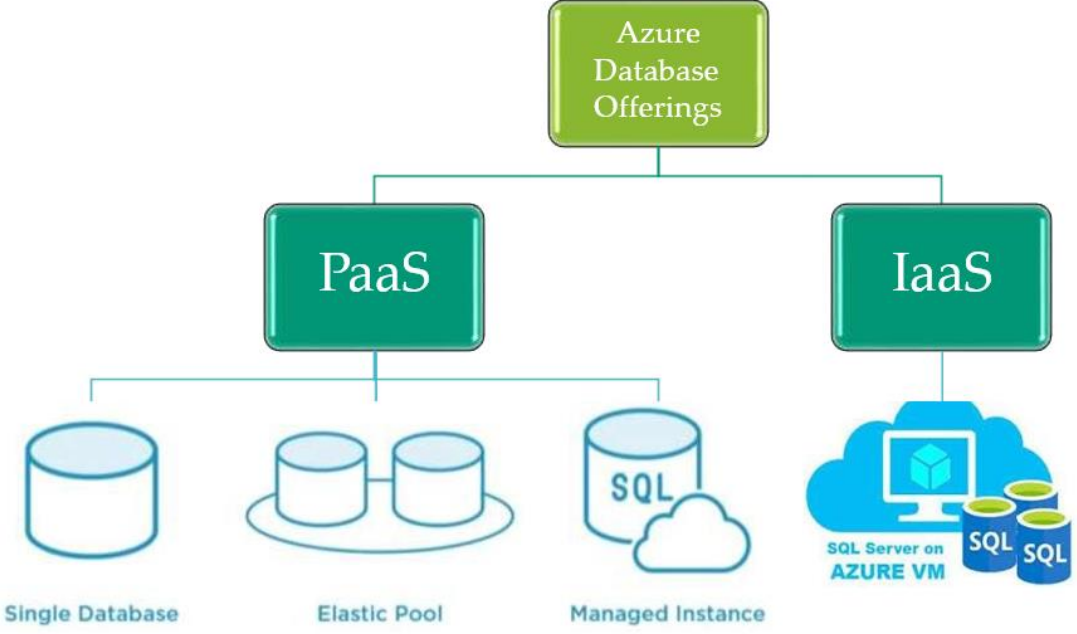


Scalability with no downtime

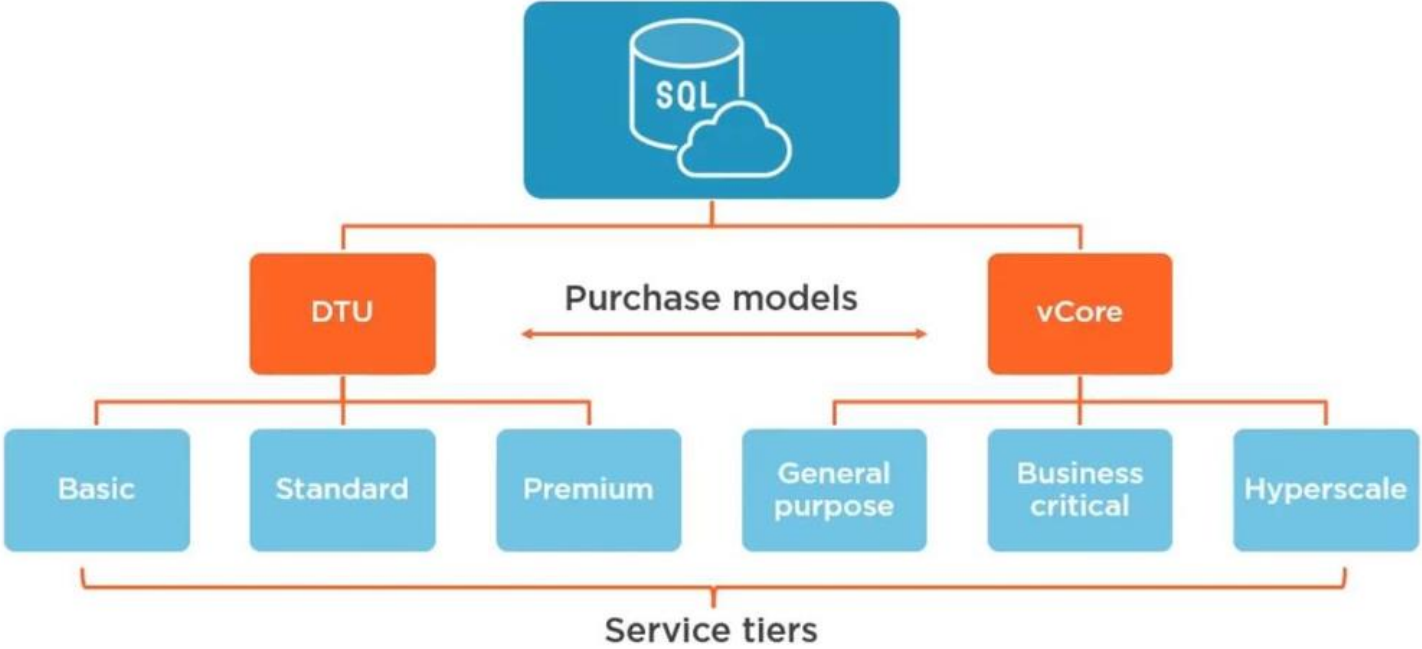


Secure and compliant for your sensitive data

Azure Database Deployment Options



Azure Sql Database Service tiers



Vcore-based vs Dtu- based Model

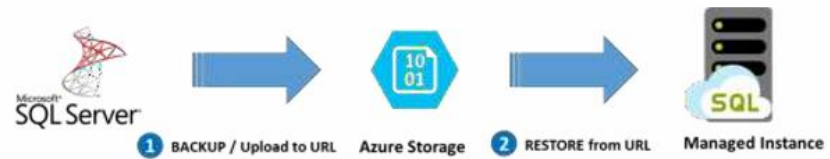
V-core based

- For Single Database, elastic pool and Managed Instance
- Best for Customers who need flexibility, control and Transparency.
- Straightforward way to translate on-premises workload to Cloud
- Microsoft recommends vCore based model

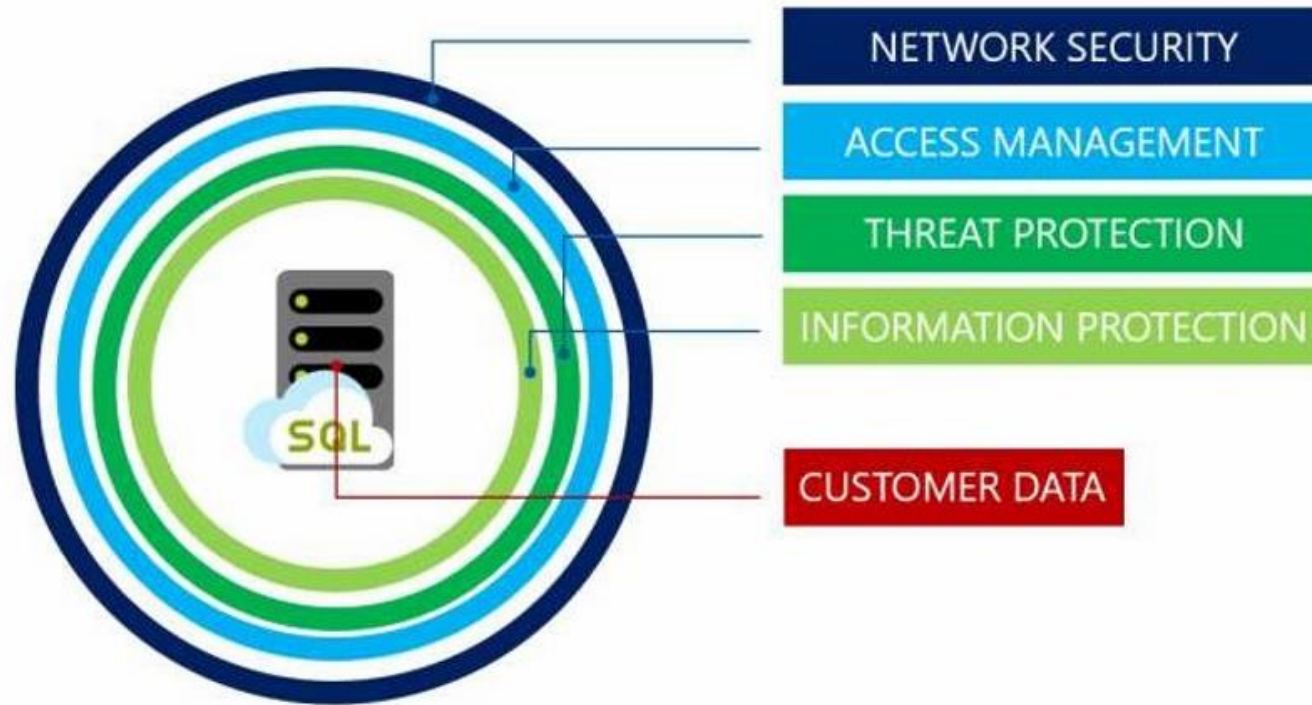
Dtu-based

- Only for Single database and Elastic pool.
- Best for customers who want single, preconfigured resource option.
- Might need to calculate amount of dtu before the migration
- If it meets our Business and performance requirement we should go for this

Migration Options

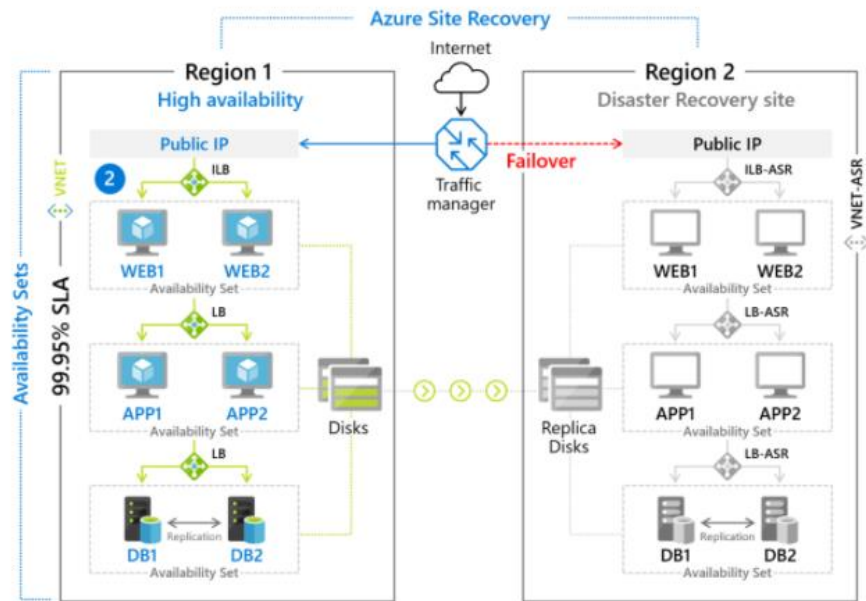


Security

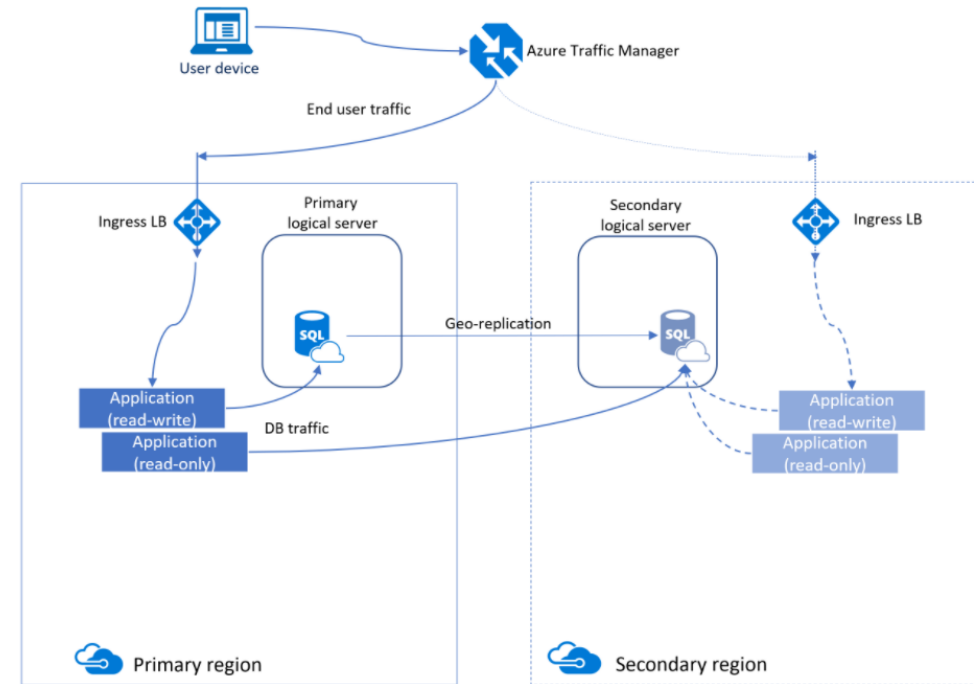


High Availability / Disaster Recovery

Azure Site Recovery



Geo Replication



Thank you!